

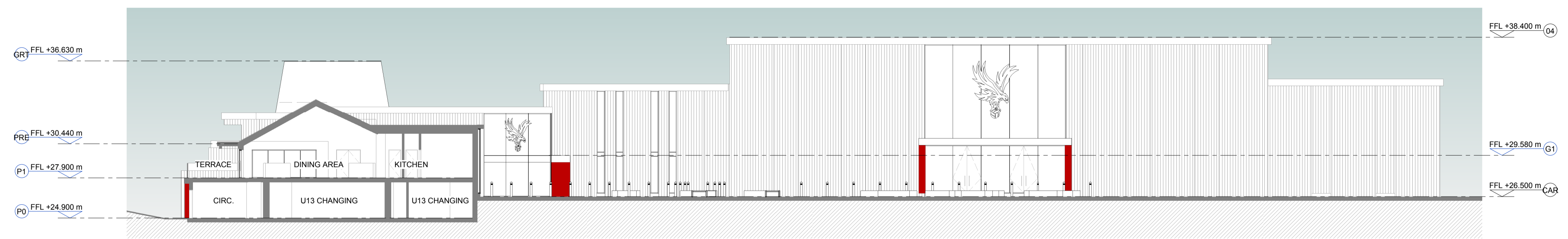
Do not scale this drawing or associated computer digital data, and use figured dimensions only. All dimensions are in millimetres and levels in metres unless noted otherwise. All dimensions should be checked on site prior to works commencing. Any discrepancies or items where dimensions cannot be determined should be reported to KSS. Revision clouds on drawing refer to changes against previous revision.

REV	DATE	DESCRIPTION	DRWN	CHKD
P1	12.11.19	For Planning	HW	NJM

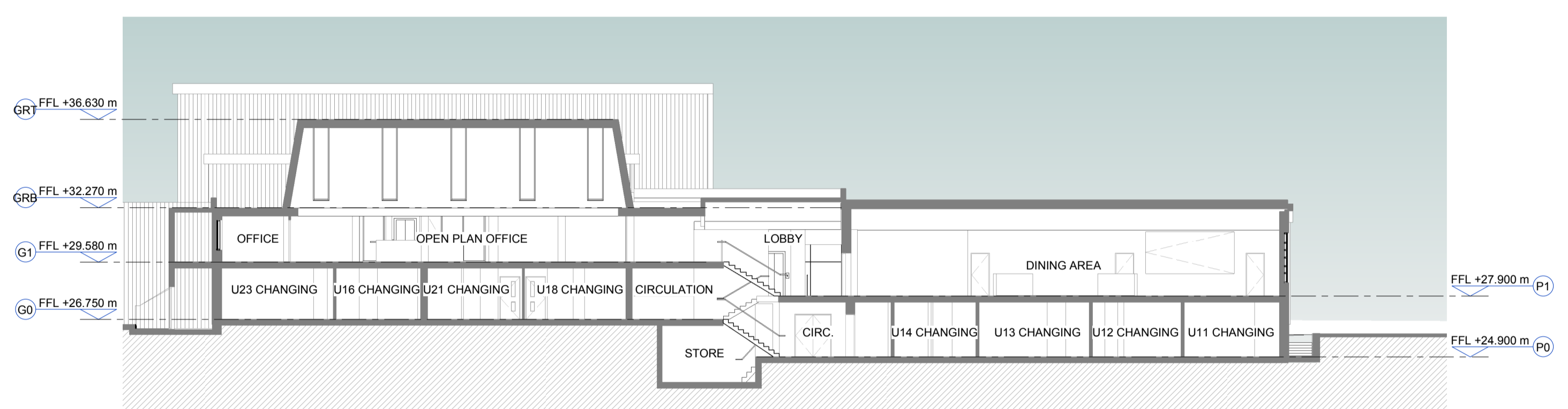
GENERAL NOTES AND LEGEND

DRAWING TO BE READ IN CONJUNCTION WITH LATEST REVISIONS OF THE FOLLOWING DRAWINGS AND DOCUMENTS:

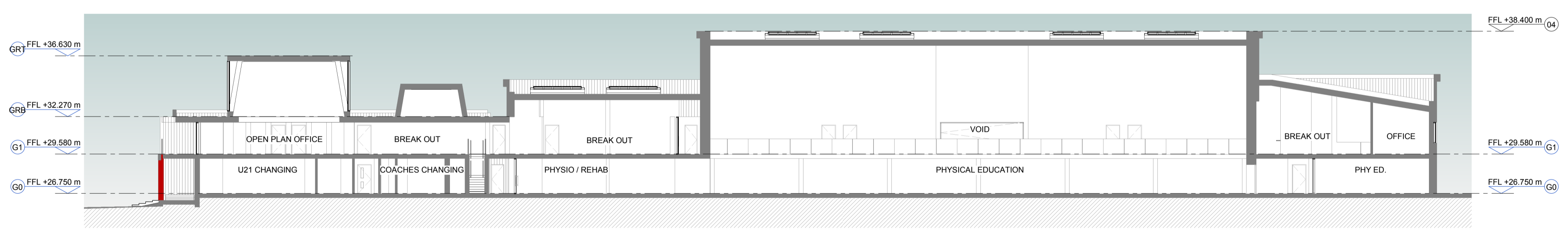
- KSS - 90 SERIES - PLANNING LOCATION & SITE PLANS
- KSS - 91 SERIES - PLANNING PLANS
- KSS - 92 SERIES - PLANNING SECTIONS
- KSS - 93 SERIES - PLANNING ELEVATIONS



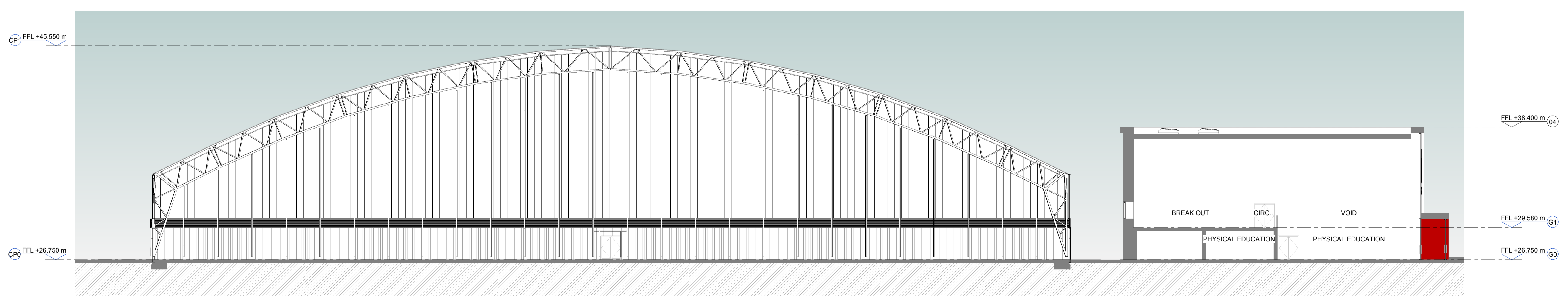
A SECTION
SECTION A-A
1 : 200



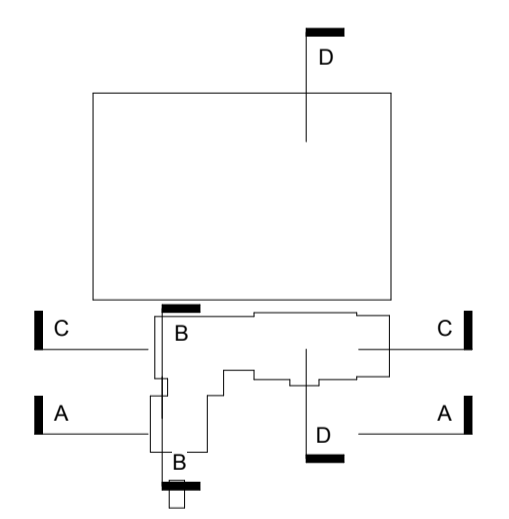
B SECTION
SECTION B-B
1 : 200



C SECTION
SECTION C-C
1 : 200



D SECTION
SECTION D-D
1 : 200



KEY PLAN

KSS London 1 James Street London W1U 1DR
Kent 7 Bighs Walk Sevenoaks TN13 1DB
KSSGROUP.COM +44 (0)20 7907 2222

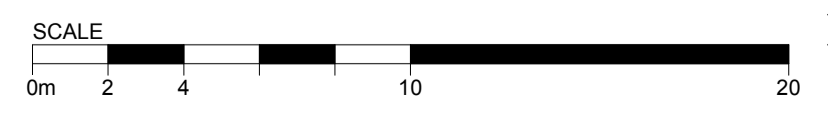
CLIENT
CRYSTAL PALACE FOOTBALL CLUB
PROJECT
CPFC ACADEMY REDEVELOPMENT
TITLE
SECTIONS AS PROPOSED

Suitability codes to BS1192:
S0 WIP, S1 Suitable for Coordination, S2 Suitable for Information, S3 Suitable for Review & Comment, S4 Suitable for Stage Approval, S5 Suitable for PM Authorization, S7 Suitable for AIM Authorization, D1 Suitable for Costing, D2 Suitable for Tender, D3 Suitable for Contractor Design, D4 Suitable for Manufacture/Procurement, A1, A2, An Approval and accepted as stage complete, B1, B2, Bn, Partially Signed Off, CR As Construction Record documentation

FILE REFERENCE
19873-KSS-AC-ZZ-M3-A-0001

SCALE	FORMAT	SUITABILITY	REVISION
1 : 200	@ A1	S2	P1

REFERENCE
19873-KSS-AC-ZZ-DR-A-9203



© KSS DESIGN GROUP LTD. KSS-Annex-Sheet-A1_U1