

REVISIONS			DRWN	CHKD
REV	DATE	DESCRIPTION	LR	NJM
P1	12.11.19	For Planning		

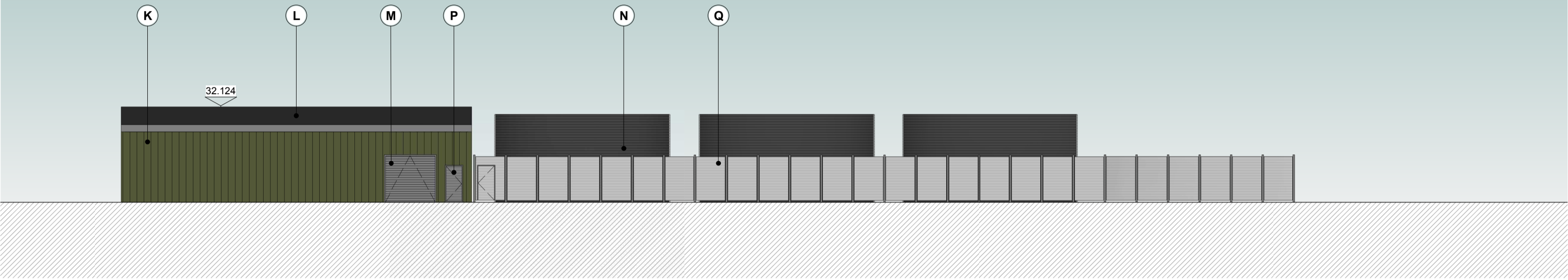
GENERAL NOTES AND LEGEND

DRAWING TO BE READ IN CONJUNCTION WITH LATEST REVISIONS OF THE FOLLOWING DRAWINGS AND DOCUMENTS:

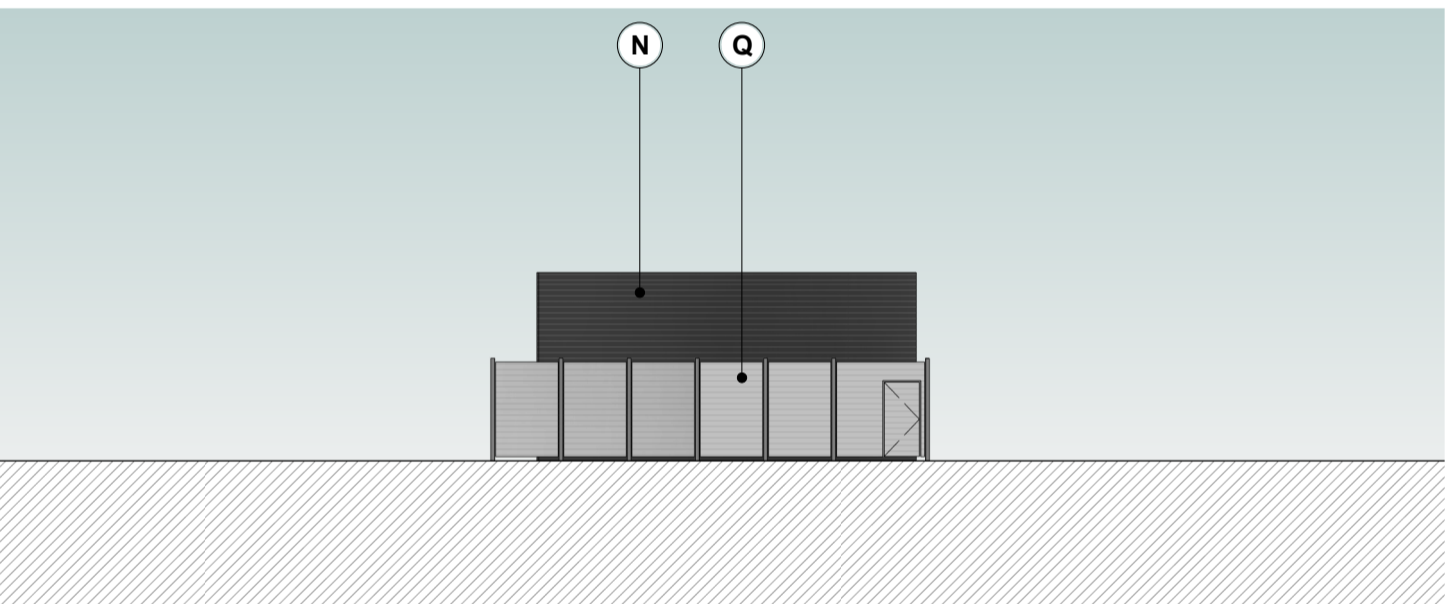
- KSS - 90 SERIES - LOCATION & SITE PLANS
- KSS - 91 SERIES - PLANNING PLAN
- KSS - 92 SERIES - PLANNING SECTIONS
- KSS - 93 SERIES - PLANNING ELEVATIONS
- KSS - 04 SERIES - DEMOLITION PLANS

MATERIALS

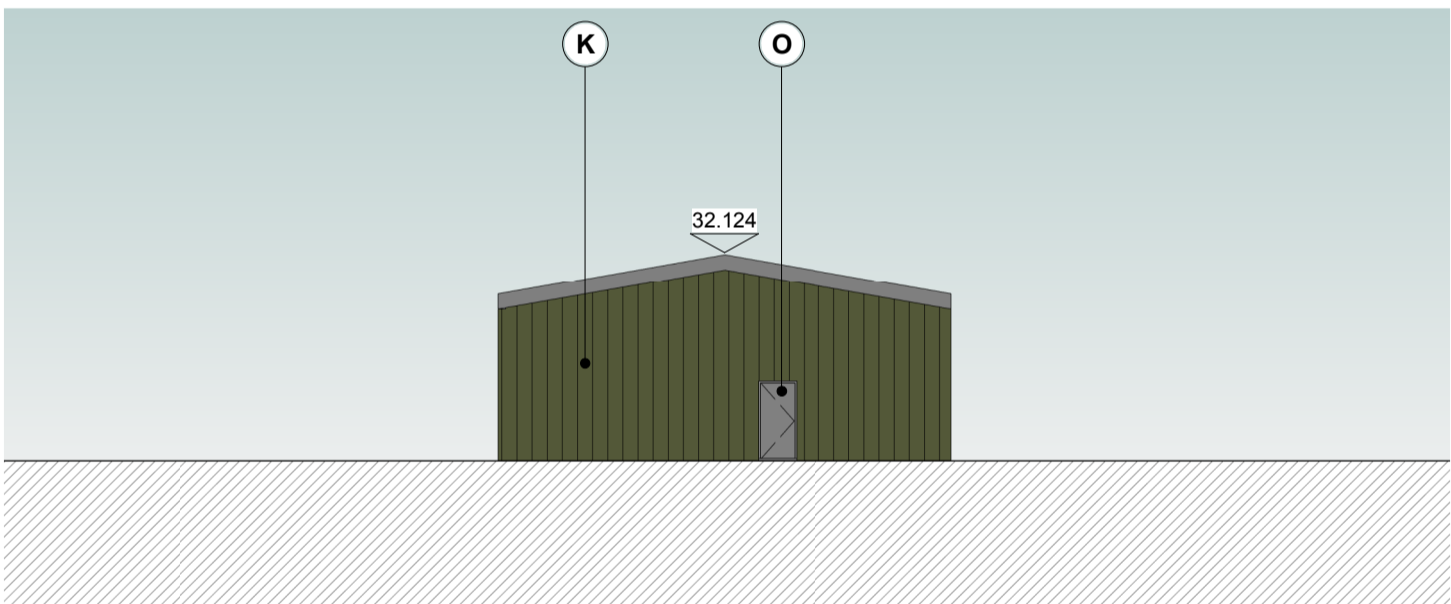
- (K) PPC METAL RAINSCREEN CLADDING
- (L) METAL ROOF
- (M) STEEL ROLLER SHUTTER
- (N) IRRIGATION TANKS
- (O) PPC EXTERNAL METAL DOOR
- (P) PPC LOUVERED DOOR
- (Q) SCREENS TO PLANT



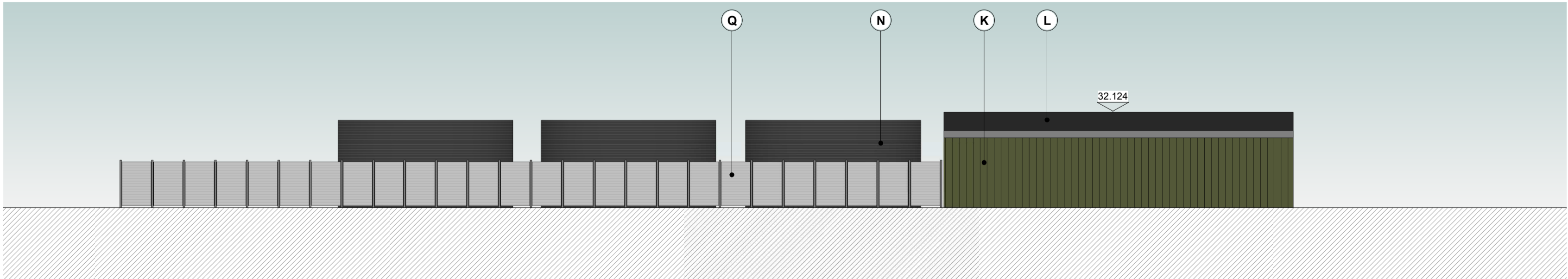
1 ELEVATION
SOUTHWEST ELEVATION 1 : 200



2 ELEVATION
SOUTHEAST ELEVATION 1 : 200



3 ELEVATION
NORTHWEST ELEVATION 1 : 200



4 ELEVATION
NORTHEAST ELEVATION 1 : 200

KEY PLAN

KSS London 1 James Street London W1U 1DR
Kent 7 Biggles Walk Sevenoaks TN13 1DB
KSSGROUP.COM ☎+44 (0)20 7907 2222

CLIENT
CRYSTAL PALACE FOOTBALL CLUB

PROJECT
CPFC ACADEMY REDEVELOPMENT

TITLE
GROUND MAINTENANCE BUILDING ELEVATIONS AS PROPOSED

Suitability codes to BS1192:
S0 WIP, S1 Suitable for Coordination, S2 Suitable for Information, S3 Suitable for Review & Comment, S4 Suitable for Stage Approval, S6 Suitable for PM Authorisation, S7 Suitable for AIM Authorisation, D1 Suitable for Costing, D2 Suitable for Tender, D3 Suitable for Contractor Design, D4 Suitable for Manufacture/Procurement, A1, A2, An Approved and accepted as stage complete, B1, B2, Bn Partially Signed Off, CR As Construction Record documentation

FILE REFERENCE
19873-KSS-AC-ZZ-M3-A-0001

SCALE	FORMAT	SUITABILITY	REVISION
1 : 200	@ A1	S2	P1

REFERENCE
19873-KSS-AC-ZZ-DR-A-9305

