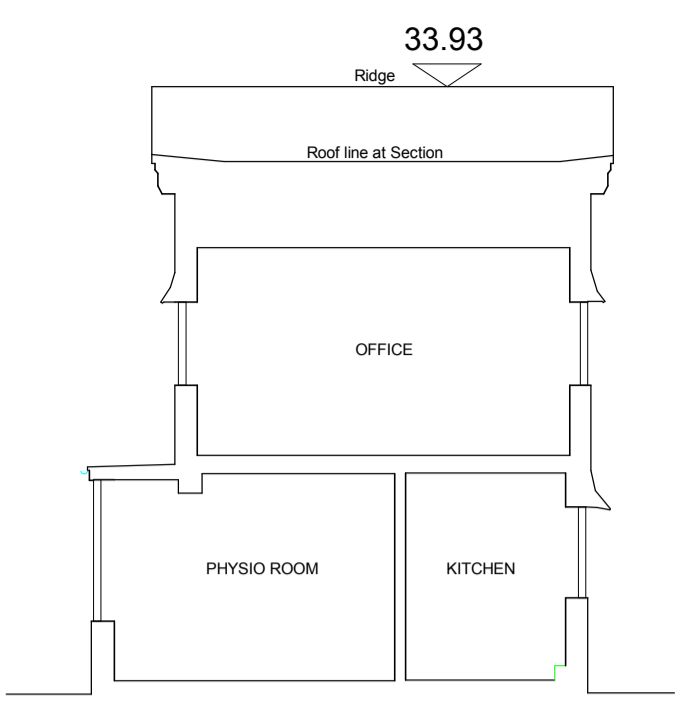
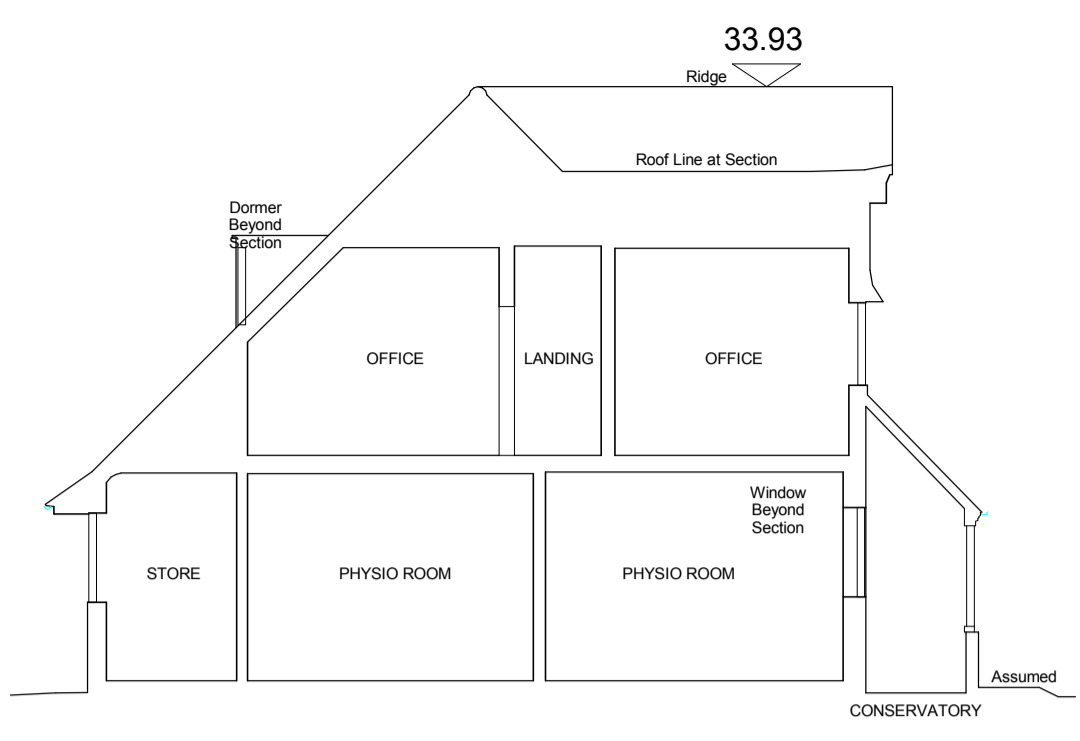


Do not scale this drawing or associated computer digital data, and use figured dimensions only. All dimensions are in millimetres and levels in metres unless noted otherwise. All dimensions should be checked on site prior to works commencing. Any discrepancies or items where dimensions cannot be determined should be reported to KSS. Revision clouds on drawing refer to changes against previous revision.

REVISIONS			
REV	DATE	DESCRIPTION	DRWN CHKD
P1	12.11.19	For Planning.	HW NJM

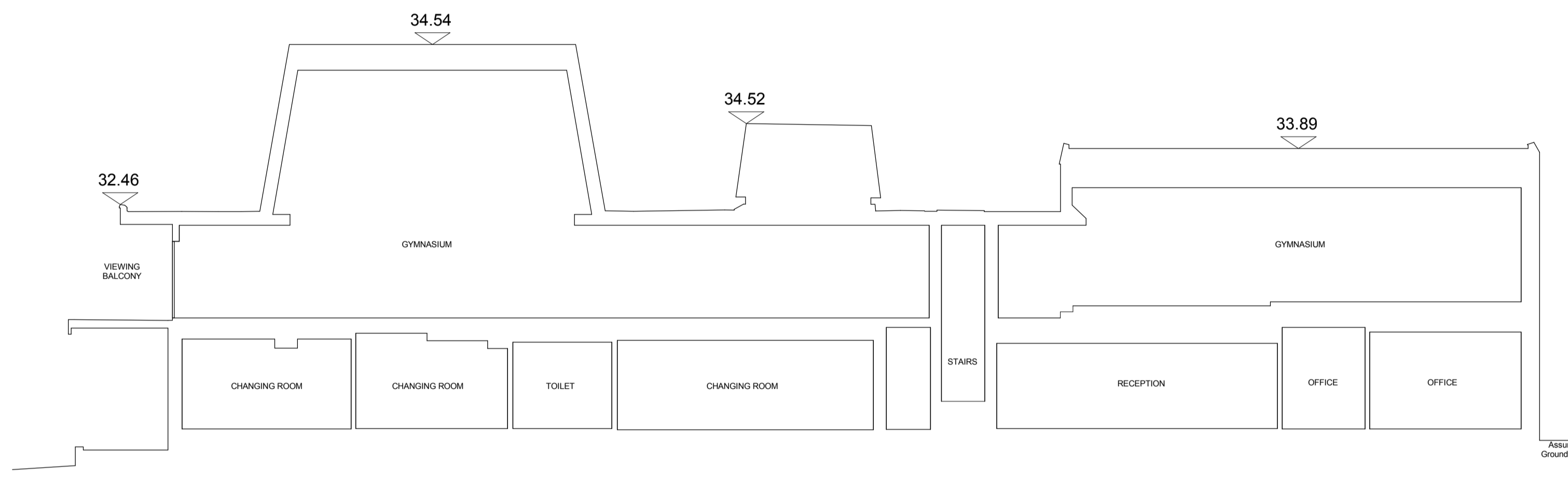
GENERAL NOTES AND LEGEND
 DRAWING TO BE READ IN CONJUNCTION WITH LATEST REVISIONS OF THE FOLLOWING DRAWINGS AND DOCUMENTS:
 KSS - 90 SERIES – PLANNING LOCATION & SITE PLANS
 KSS - 91 SERIES – PLANNING PLANS
 KSS - 92 SERIES – PLANNING SECTIONS
 KSS - 93 SERIES – PLANNING ELEVATIONS

REFER TO MALBY SURVEYS DRAWING: 19/008/400



A SECTION
SECTION A-A 1: 100

B SECTION
SECTION B-B 1: 100

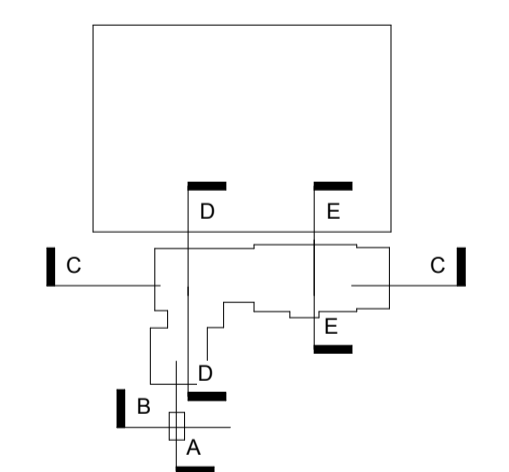


SECTION C-C CONTINUES BELOW

C1 SECTION
SECTION C-C 1: 100



C2 SECTION
SECTION C-C CONTINUED 1: 100



KEY PLAN

KSS London 1 James Street London W1U 1DR
 Kent 7 Biggles Walk Sevenoaks TN13 1DB
 KSSGROUP.COM ☎+44 (0)20 7907 2222

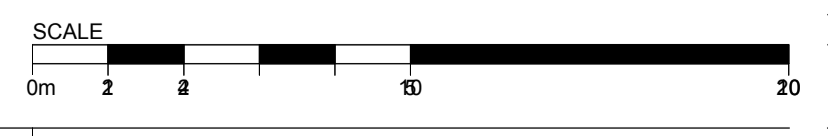
CLIENT
CRYSTAL PALACE FOOTBALL CLUB
 PROJECT
CPFC ACADEMY REDEVELOPMENT
 TITLE
SECTIONS AS EXISTING SHEET 1 OF 2

Suitability codes to BS1192:
 S0 WIP, S1 Suitable for Coordination, S2 Suitable for Information, S3 Suitable for Review & Comment, S4 Suitable for Stage Approval, S6 Suitable for PM Authorisation, S7 Suitable for AIM Authorisation, D1 Suitable for Costing, D2 Suitable for Tender, D3 Suitable for Contractor Design, D4 Suitable for Manufacture/Procurement, A1, A2, An, Approved and accepted as stage complete, B1, B2, Bn, Partially Signed Off, CR As Construction Record documentation

FILE REFERENCE
 19873-KSS-AC-ZZ-M3-A-0001

SCALE 1: 100 @ A1 S2 P1

REFERENCE
 19873-KSS-AC-ZZ-DR-A-9201



© KSS DESIGN GROUP LTD. KSS-Annex-Sheet-A1_U1