

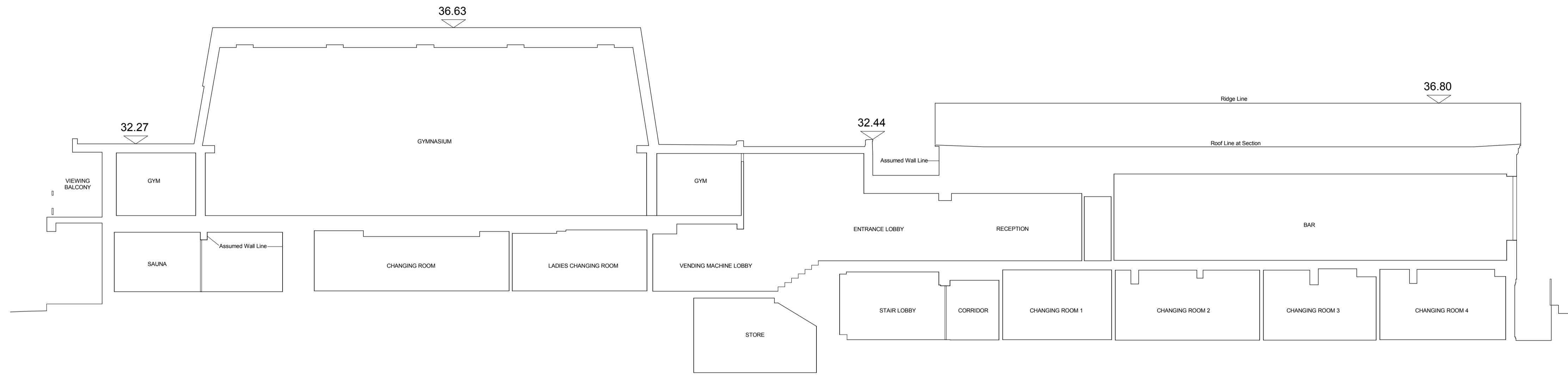
Do not scale this drawing or associated computer digital data, and use figured dimensions only. All dimensions are in millimetres and levels in metres unless noted otherwise. All dimensions should be checked on site prior to works commencing. Any discrepancies or items where dimensions cannot be determined should be reported to KSS. Revision clouds on drawing refer to changes against previous revision.

REV	DATE	DESCRIPTION	DRWN	CHKD
P1	12.11.19	For Planning	HW	NJM

GENERAL NOTES AND LEGEND
DRAWING TO BE READ IN CONJUNCTION WITH LATEST REVISIONS OF THE FOLLOWING DRAWINGS AND DOCUMENTS:

- KSS - 90 SERIES - PLANNING LOCATION & SITE PLANS
- KSS - 91 SERIES - PLANNING PLANS
- KSS - 92 SERIES - PLANNING SECTIONS
- KSS - 93 SERIES - PLANNING ELEVATIONS

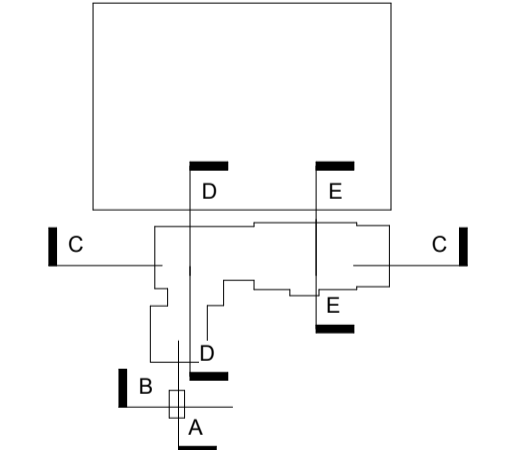
REFER TO MALTY SURVEYS DRAWING: 19/008/400



D SECTION
SECTION D-D
1 : 100



E SECTION
SECTION E-E
1 : 100



KEY PLAN

KSS London 1 James Street London W1U 1DR
Kent 7 Biggles Walk Sevenoaks TN13 1DB
KSSGROUP.COM ☎+44 (0)20 7907 2222

CLIENT
CRYSTAL PALACE FOOTBALL CLUB
PROJECT
CPFC ACADEMY REDEVELOPMENT
TITLE
SECTIONS AS EXISTING SHEET 2 OF 2

Suitability codes to BS1192:
S0 WIP, S1 Suitable for Coordination, S2 Suitable for Information, S3 Suitable for Review & Comment, S4 Suitable for Stage Approval, S6 Suitable for PM Authorisation, S7 Suitable for AM Authorisation, D1 Suitable for Costing, D2 Suitable for Tender, D3 Suitable for Contractor Design, D4 Suitable for Manufacture/Procurement, A1, A2, An, Approved and accepted as stage complete, B1, B2, Bn, Partially Signed Off, CR As Construction Record documentation

FILE REFERENCE
19873-KSS-AC-ZZ-M3-A-0001

SCALE	FORMAT	SUITABILITY	REVISION
1 : 100	@ A1	S2	P1

REFERENCE
19873-KSS-AC-ZZ-DR-A-9202

